

• UNIVERSITY OF MISSISSIPPI •  
WORLD CLASS TEACHING PROGRAM  
WCTP.OLEMISS.EDU • CANDIDATE SUPPORT •

---

# JOIN OUR SQUAD

Complete the process in 1, 2, or 3 years. It's your choice!

---



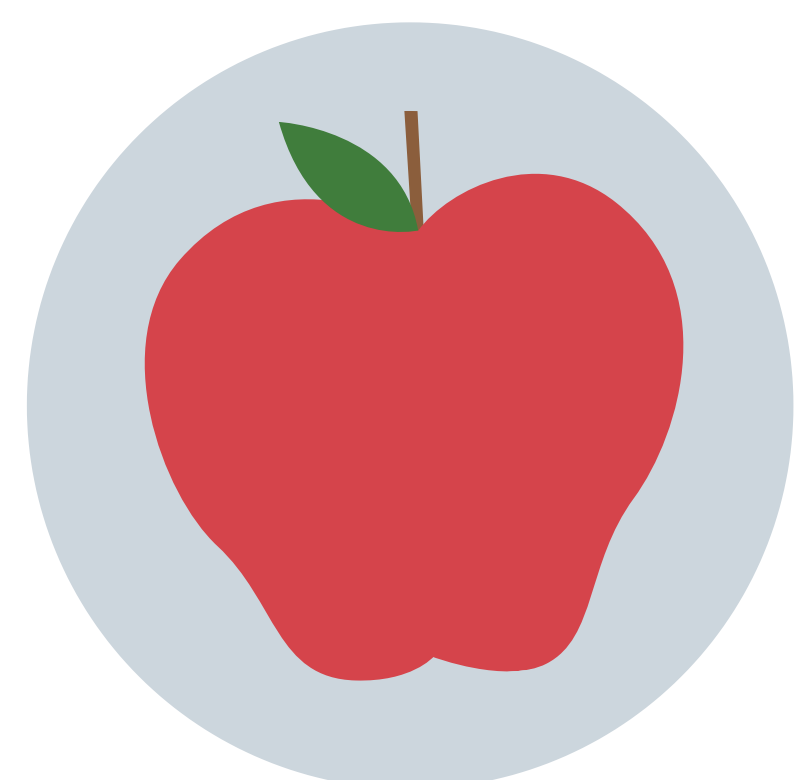
## COST

\$100 Enrollment Fee includes:  
an NBCT mentor, WCTP 601,  
Super Saturday,  
and webinars!



## WCTP 601

Self-paced, step-by-step,  
Blackboard candidate support  
course includes suggested  
timelines, assignments, and  
modules for each component.  
All the resources we have.



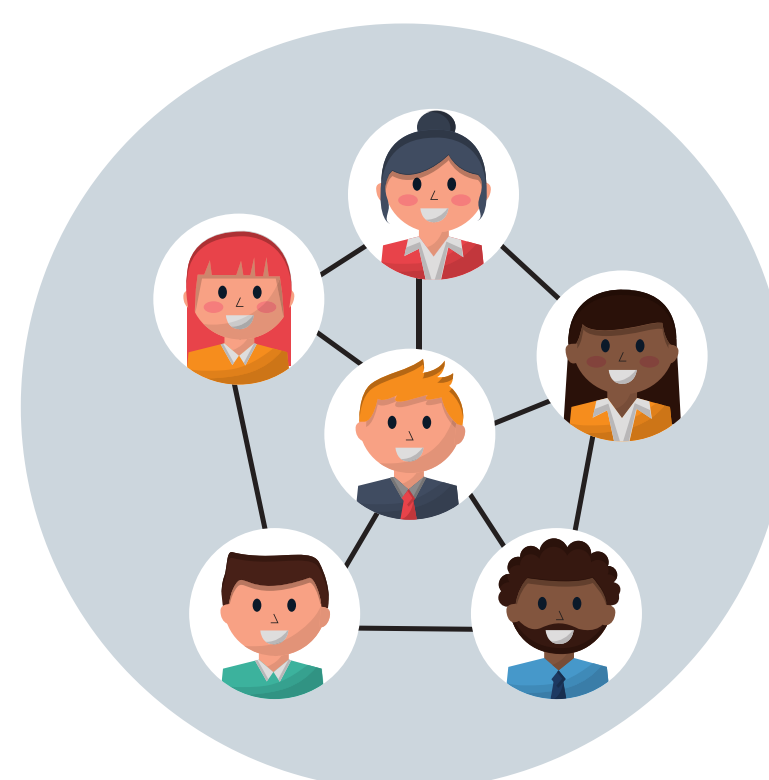
## CONTINUING EDUCATION UNITS

Earn CEUs for attending  
mentoring and/or using  
WCTP 601.



## MENTORS

All of our mentors are NBCTs,  
trained and assigned to their  
specific certificate area (when  
possible). We mentor for the  
assessment center.



## FACE-2-FACE

Meets twice monthly as a  
cohort group in Tupelo,  
Oxford, Southaven, and  
Grenada. WCTP 601 is used as  
a supplement.



## ONLINE

**Location does not matter.**  
Candidates work their way through  
the WCTP 601 modules and  
assignments. Face-to-Face  
monthly Zoom meetings.

# • NATIONAL BOARD CERTIFICATION • JUST THE FACTS

---

## FLEXIBLE PROCESS

Complete the process in 1, 2, or 3 years. It's your choice!  
Two year plan = 1 component a semester!

---



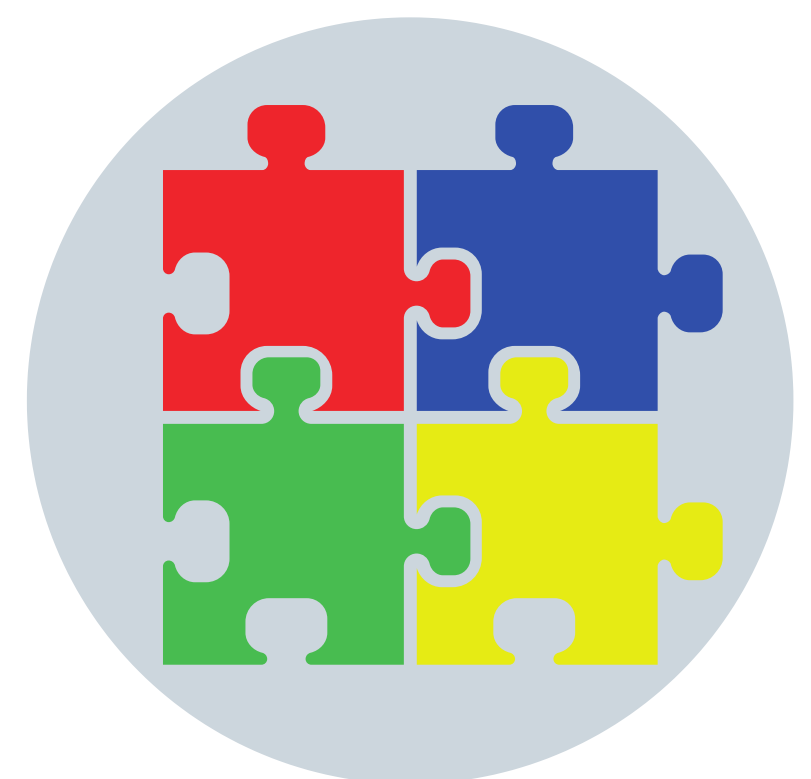
### COST

\$475 per component.  
Mississippi will REIMBURSE all first time candidates when you receive your score report, regardless!



### \$ INCENTIVE \$

NBCTs in Mississippi earn an additional \$6000 a year! Sixteen counties earn \$10,000! Yes, this counts toward retirement.



### 4 COMPONENTS

C1 - Content Knowledge  
C2 - Differentiation in Instruction  
C3- Teaching Practice & Learning Environment  
C4 - Effective & Reflective Practioner



### RESOURCES

Visit [wctp.olemiss.edu](http://wctp.olemiss.edu) and look in our toolbox (lower right-hand corner) for all the available National Board resources including components & standards.



### PADLET

Access our Padlet to learn more and for our summer recorded trainings!



### PREREQUISITES

- (1) Completed 3 years of teaching.  
(Time spent on alternate route counts)
- (2) Possess a bachelor's degree from an accredited institution
- (3) Hold a valid state teaching license